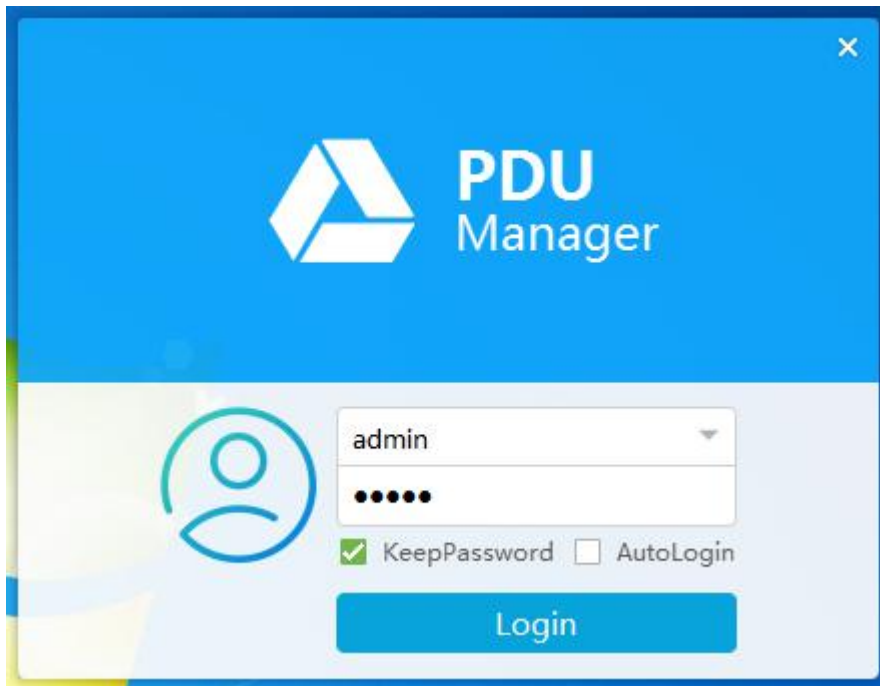


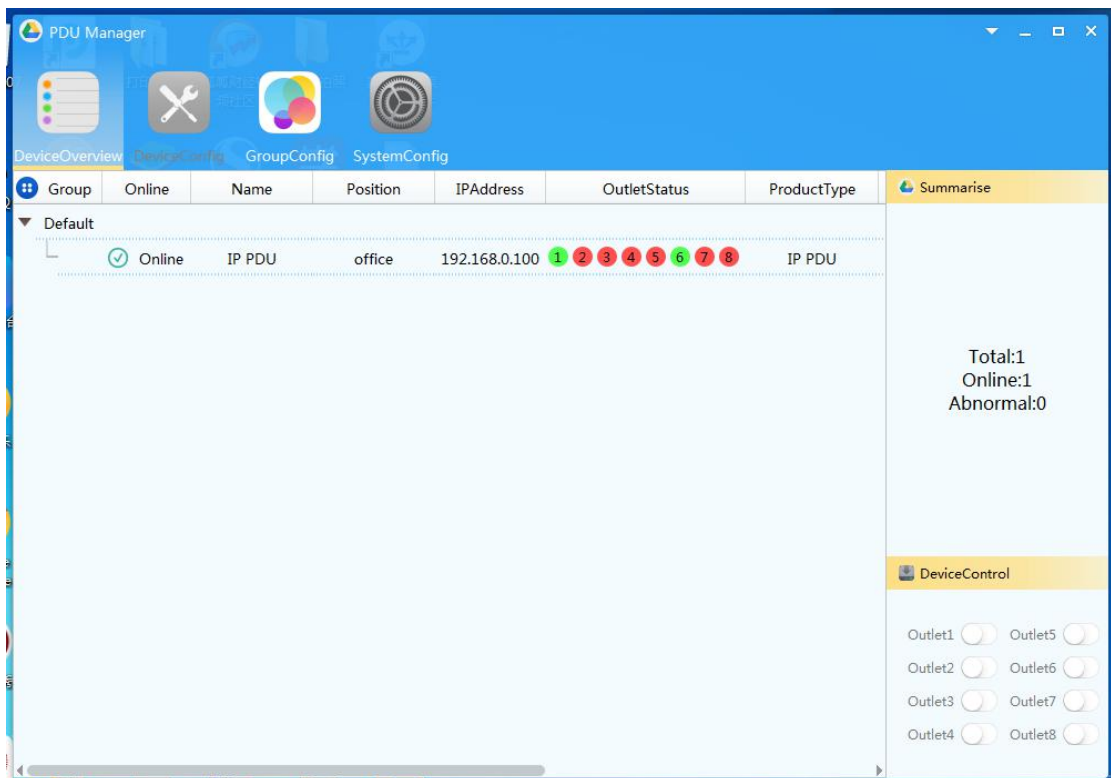
# Brief Introduction for PDU Centralized Management Software

## 1) Login Interface



Login user authentication window, the user can login identity selection according to their own authority.

## 2) Master interface



Group	Online	Name	Position	IPAddress	OutletStatus	ProductType	mwareV	Voltage(V)	Current(A)	Temperature	Summarise
Default	Online	IP PDU	office	192.168.0.100	1 2 3 4 5 6 7 8	IP PDU		212	0.00	25	

According to the online PDUs, users can view the status of each port on and off, voltage, current, temperature, humidity and other states.



This window allows users to manually turn the power on or off.

### 3) Device Configuration window

IP: 192.168.0.100

SubNetMask: 255.255.255.0

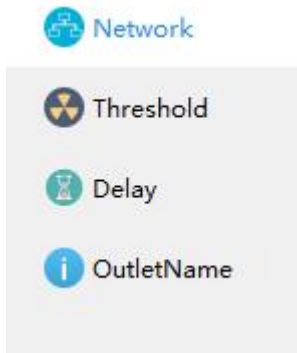
Gateway: 192.168.0.1

MAC: 00:04:A3:00:00:00

UDP Port: 51230

Name: IP PDU

Location: office



Configuration window has four options, namely, network, threshold, delay, jack name setting options.

IP	<input type="text" value="192.168.0.100"/>
SubNetMask	<input type="text" value="255.255.255.0"/>
Gateway	<input type="text" value="192.168.0.1"/>
MAC	<input type="text" value="00:04:A3:00:00:00"/>
UDP Port	<input type="text" value="51230"/>
Name	<input type="text" value="IP PDU"/>
Location	<input type="text" value="office"/>

### 3.1) Network Sett Options

CurrentWarnValue	<input type="text" value="5.0"/>
CurrentOverloadValue	<input type="text" value="6.0"/>
VoltageWarnValue	<input type="text" value="230"/>
VoltageOverloadValue	<input type="text" value="300"/>
TemperatureLowerLimit	<input type="text" value="5"/>
TemperatureUpperLimit	<input type="text" value="60"/>
HumidityWarnValue	<input type="text" value="80"/>

### 3.2) Threshold Set Options

### OpenDelay

Outlet1	5	▲▼
Outlet2	6	▲▼
Outlet3	7	▲▼
Outlet4	8	▲▼
Outlet5	9	▲▼
Outlet6	10	▲▼
Outlet7	11	▲▼
Outlet8	12	▲▼

### CloseDelay

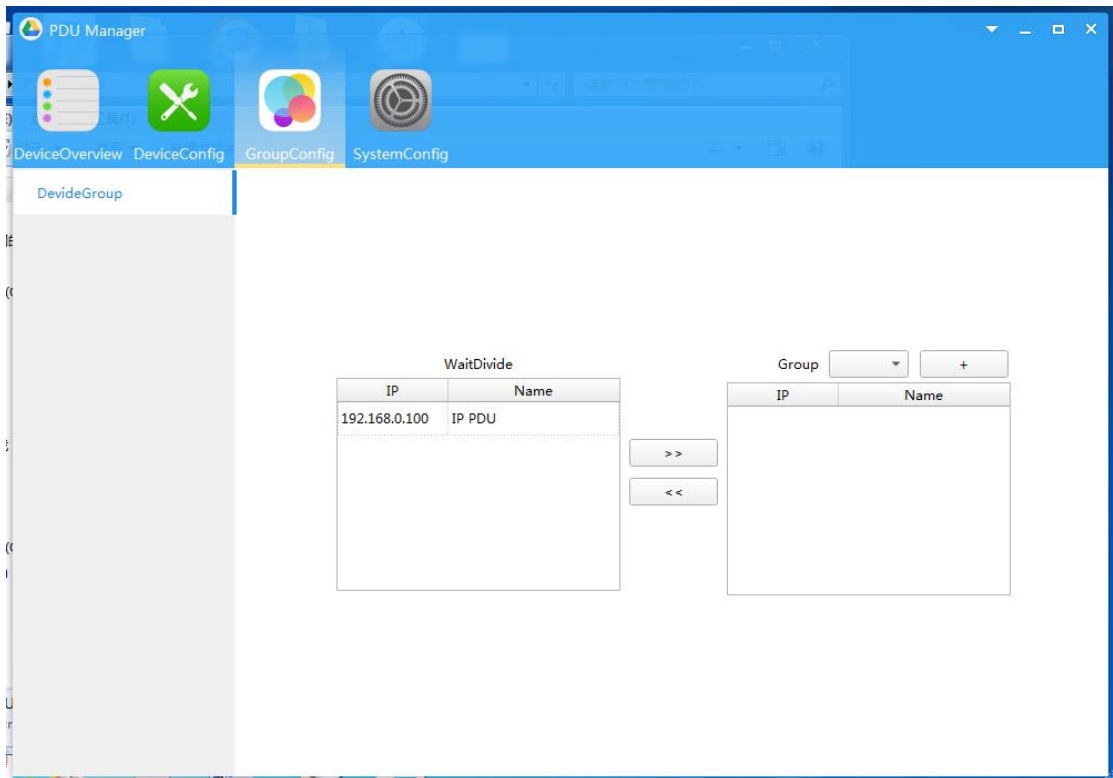
Outlet1	5	▲▼
Outlet2	6	▲▼
Outlet3	7	▲▼
Outlet4	8	▲▼
Outlet5	9	▲▼
Outlet6	10	▲▼
Outlet7	11	▲▼
Outlet8	12	▲▼

### 3.3) Delay Set Options

Outlet1	A
Outlet2	B
Outlet3	TEST
Outlet4	USER1
Outlet5	admin
Outlet6	USER2
Outlet7	outlet7
Outlet8	outlet8

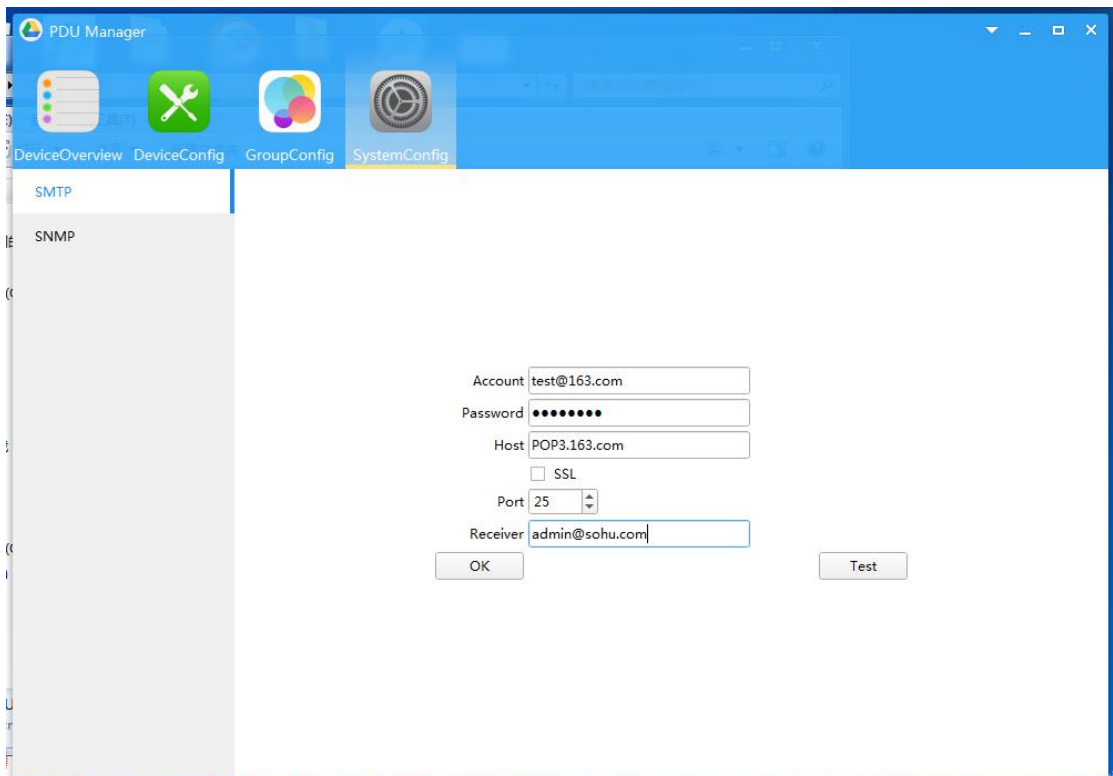
### 3.4) Jack name setting options

#### 4) Group Settings window



The user can set the group management according to the PDU resources.

#### 5) System Configuration window



The user can set the alarm mail of the administrator mail receiving system.